

# Starting Nursery Class September 2023



# Meet the Staff



Mrs Storer  
Headteacher



Mrs Spence  
Acting Deputy  
Headteacher



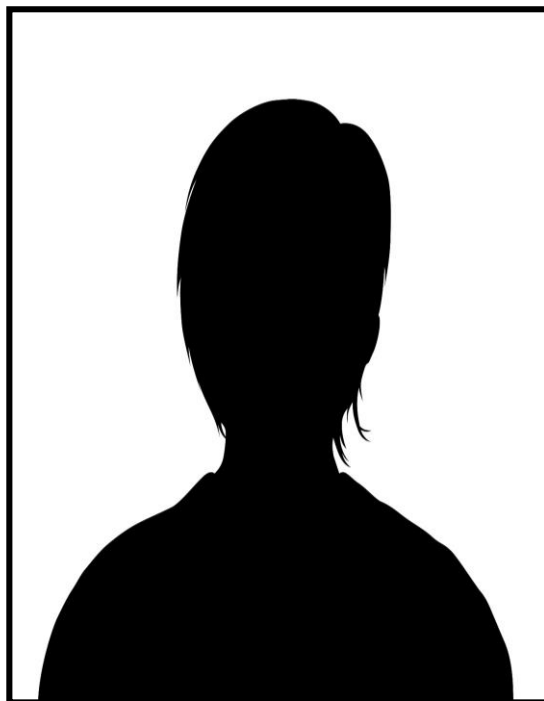
Mrs McVittie  
Reception teacher &  
Early Years Leader



Mrs Bratt  
Learning Mentor



Mrs Chalmers  
Nursery teacher



TBC  
Teaching Assistant



Magda  
Lunchtime  
Play Leader

# Provision available

<b>Morning session (15 hours) 3 to 4 year old</b>	<b>8:50am – 11:50am</b>
<b>30 hours session 3 to 4 year old</b>	<b>8:50am- 2:50pm</b>
<b>Top up care for 30 hours</b>	<b>2:50pm – 3:15pm (£2.50 fee and booking required)</b>
<b>Afternoon session (15 hours) 2,3 &amp; 4 year old</b>	<b>12:15pm – 3:15pm</b>

(£15 paid sessions)

# A typical day in Nursery Class

# Start of the day



Please line up along the right and allowing a social distance gap.

This is where the children will come into school. At this time children will be dropped off at the door.



# What happens if your child gets upset?

We will help and support your child into school as we normally do. We ask if there are lots of parents behind you to step to the side and once they have left we will help you and your child.

Children quickly settle and the staff are very nurturing and caring to comfort them. If your child has been upset being left, we will give you a call to let you know how they are.



# Start of the day

Children independently take off and hang their coats on a peg.



They put up their name and then busy learn.

# Family Time

The children will take part in a fun practical carpet session.



# Busy Learning

The children will access the learning environment to practise, apply and consolidate their knowledge and skills. The adults will plan and set up the environment to support learning and development of children.







**"CHILDREN LEARN AS THEY  
PLAY. MOST IMPORTANTLY, IN PLAY  
CHILDREN LEARN HOW TO LEARN."**

O. FRED DONALDSON

# Snack and drinks

The children will be provided with a piece of fruit and milk at school. Each day your child will need to bring in a full bottle of fresh water which they can access throughout the day.





# Fun Phonics

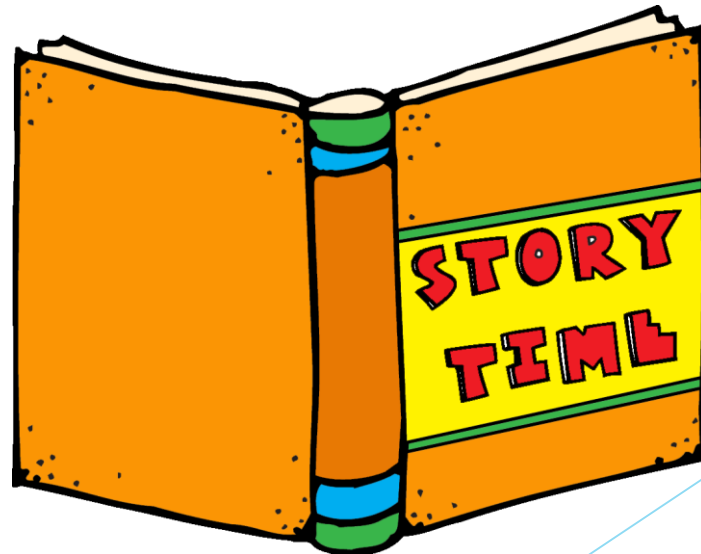
The children take part in lots of fun practical activities which focus on developing their speaking and listening skills. They focus on listening to the sounds around them and also begin building on their segmenting and blending skills. This is crucial for learning to read!



# Story and Song Time

Everyday ends with a story and songs. These are vital for the children literacy development and a lot of fun!!!

The children also reflect on the learning they have taken part in during the session.



# Lunch time

Children who are 30 hours will have lunch with their class in the Nursery classroom.



Please provide a healthy packed lunch in a named lunch bag.  
Drinks to be water or juice.

Please note no nuts allowed in school due to allergies. Grapes, cherry tomatoes need to be cut into small pieces.





# Home Time

Please wait outside the classroom in a line to allow others to pass safely. We will call the children and hand them over to you. Please let us know if it is someone else collecting your child.



If we need to speak to you we will call you to one side.

Please be patient with us while we learn who you are as we have lots of families and carers to meet.

# School Uniform

Nursery	
Winter	Grey skirt, trousers or pinafore, White polo shirt Red V neck jumper or red cardigan Black shoes (not trainers!) Grey or white socks or grey tights
Summer	Option to wear grey tailored shorts or red gingham dress

Please can you ensure **ALL** items of clothing are labelled.

2 year old children are encouraged to wear a similar uniform however they may be more comfortable in leggings and joggers which also makes toilet training easier.

# School uniform orders

Please order uniform from the link below.

Orders need to be placed by **1<sup>st</sup> August** to secure delivery before school starts in September.

The orders will come direct to your house.

<https://www.pbuniform-online.co.uk/johnsheltonprimary>

# What to bring

Please ensure your child has a spare change of clothes in school. As much as we try to protect the children's clothes with aprons they can get wet from water play and sometimes children get very engrossed in activities that they forget to go to the toilet.

If your child is learning to use the toilet please provide wipes, extra pants, sock and trousers or skirts in a named rucksack.

If your child is in nappies please ensure they bring a change of nappies and wipes in a named rucksack.

# Parents/Carers as partners

We will work very closely with you as parents and carers.

We will be holding lots of workshops to help you support your child's learning at home. These may be done virtually and you will be kept up to date when these take place.

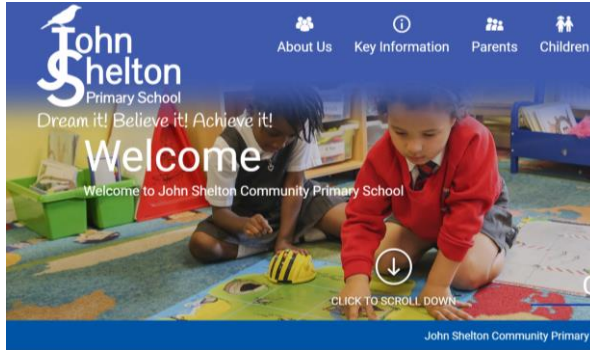


Easter Bonnet Parade

Our Math's  
workshop



# Online communication



## medicaltracker



# Attendance and Punctuality

It is important that you are punctual and keep to the allocated times, this is for safety and will help your child.

If for some reason your child is unwell please ring the school to let us know. If we are unaware of any appointments or illnesses you will receive a phone call.



SEPTEMBER 2021						
SUN	MON	TUE	WED	THU	FRI	SAT
			1	2	3	4
5	6	7	8	9	10	11
12	13	14	15	16	17	18
19	20	21	22	23	24	25
26	27	28	29	30		

[www.free-printable-calendar.com](http://www.free-printable-calendar.com)

# Early Years Pupil Premium

Important funding is allocated to school based on children eligible for free school meals and this helps our school. The school uses this money to benefit the children in lots of ways.

If you are in receipt of the follow the school will receive the funding:

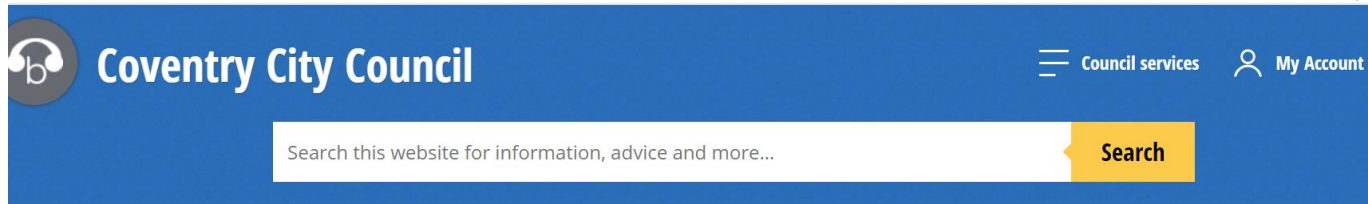
- ▶ Income Support
- ▶ Income based Job Seekers Allowance
- ▶ Income related Employment and Support Allowance
- ▶ The Guarantee Element of State Pension Credit
- ▶ Asylum Seeker (Immigration & Asylum Act 1999, part VI)
- ▶ Child Tax Credit but do not receive Working Tax Credit and that my annual income is less than £16,190.
- ▶ Universal Credit and that my annual net earnings are less than £7,400



# School Admissions

When applying for a school place you will need to do this via the Coventry City Council website.

Unfortunately we cannot guarantee places to our Nursery children.



[Home](#) > [Schools, libraries and learning](#) > [Schools and schooling](#) > [School admissions](#)

## School admissions



[https://www.coventry.gov.uk/info/148/school\\_admissions](https://www.coventry.gov.uk/info/148/school_admissions)

# Codes, funding, payments and consent

All funding codes and payments will be dealt with by the school office so if you have any queries please email or ring the school on:

- ▶ Telephone: [024 76686063](tel:02476686063)
- ▶ Email: [admin@jsprimary.org](mailto:admin@jsprimary.org)

# New September Starters

On Tuesday 5<sup>th</sup> and Wednesday 6<sup>th</sup> September Mrs Chalmers and TA will be carrying out home visits.

They will stand at your front door to say 'hello'.

We plan to start full provision on Thursday 7<sup>th</sup> September.

# Returning September Starters

Your child will attend on **Tuesday 8<sup>th</sup>**  
**September** for their agreed session.

**Friday 15<sup>th</sup> September 'Hug in a Mug' Parents/Carers session**

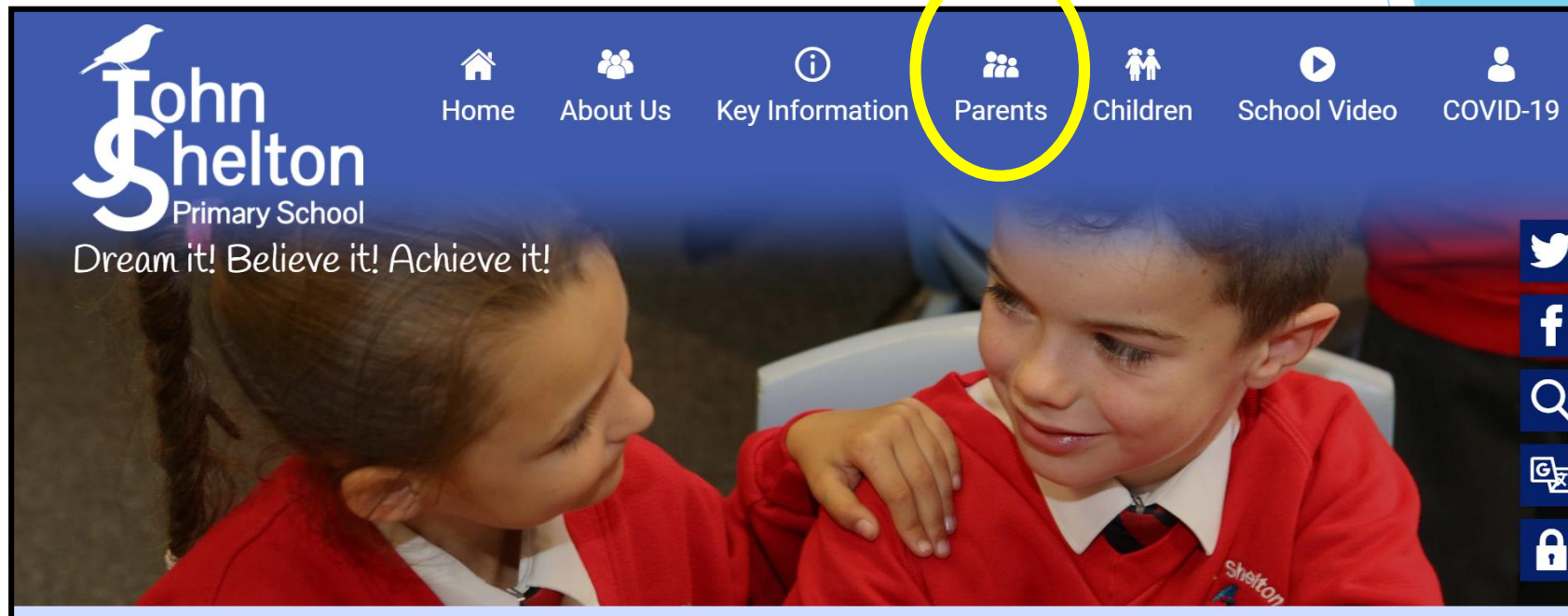
# Getting ready for Nursey

Things that will support you and your child for  
September:

- \* Encourage your child to eat independently  
using cutlery
- \*To independently use the toilet and wash  
hands
- \*Get dressed and undressed by themselves
  - \*Get into a good bedtime routine
  - \*Share lots of stories and sing songs

# Our school website

<https://www.johnshelton.org.uk/>



Extra information about childcare providers for example childminders:

[Coventry Information Directory | Childcare](#)

<https://cid.coventry.gov.uk/kb5/coventry/directory/family.page?familychannel=2>

We look forward to  
seeing you all very  
soon.

Enjoy the summer  
holiday and stay  
safe.